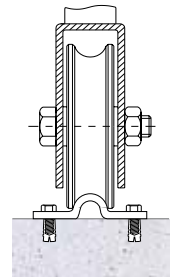
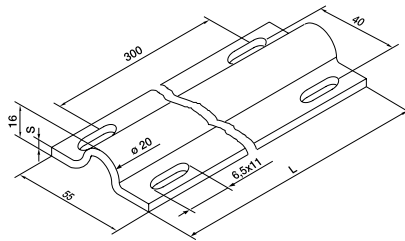




RAIL

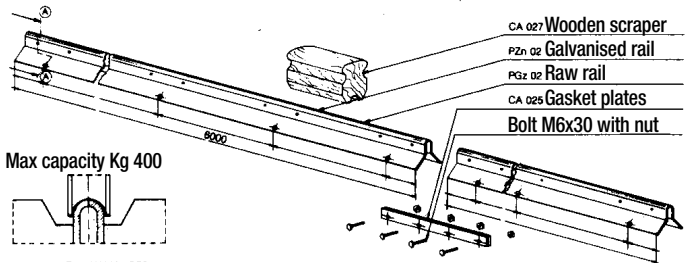
RAIL

IBBI HUMP

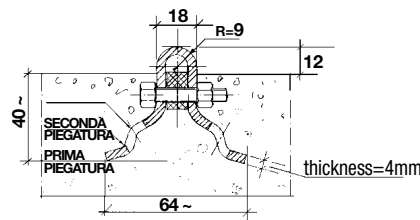


ITEM CODE	FINISH	MEASUREMENT	L	A	D	F	G	H	I	S	PACKAG.	GROSS WEIGHT Kg
10201501	001	Ø 15,5	3000	55	Ø 15,5	Ø 9,5	10	13	42	3	Pz.1	4,650
*10201502	001	Ø 15,5	6000	55	Ø 15,5	Ø 9,5	10	13	42	3	Pz.1	9,300
10201505	001	Ø 19,5	3000	55	Ø 19,5	Ø 12	13	16	42	4	Pz.1	4,800
10201510	001	Ø 19,5	6000	55	Ø 19,5	Ø 12	13	16	42	4	Pz.1	9,600

- For total convenience compared to the 8 traditional systems, saving 3'/35% 9
- To eliminate workshop work (a simple customised cut is sufficient)
- For final preparation in short times
- For realising wanted modular lengths
- For realising waste and welding
- For eliminating anchoring alle, clamps, cramps to R.C..
- For combining long binary with a standardised quick joint
- To avoid jolts at passing of trolleys or forklifts on fitted binary to floor
- For the immediate delivery of binary whether raw or hot galvanised (available in storage)
- For the supply of binary with requested length (minimum quantity 2000 Kg)
- For the runway of wheels with different grooves (round groove recommended)
- For easy laying
- To easily create the two side steps for passing of the wheel, with the use of a universal scraper



PROTRUDING FROM FLOOR GUIDE SOLUTION

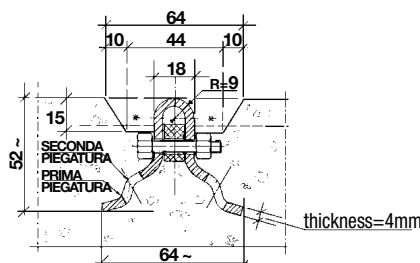


IBBI

Round groove wheel capacity each = 400 Kg

Weight:
thickness 3 mm = 2,8 Kg/ml
thickness 4 mm = 3,6 Kg/ml

FITTED IN FLOOR GUIDE SOLUTION

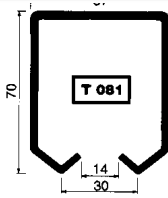


IBBI

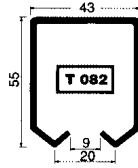
Round groove wheel capacity each = 400 Kg

* = move with wooden scraper

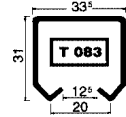
MONORAIL



Type for big trolleys
Weight per m.: Kg 5,000



Type for medium trolleys
Weight per m.: Kg 3,180



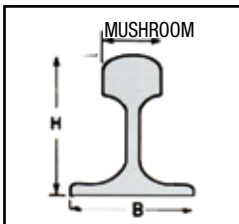
Type for small trolleys
Weight per m.: Kg 1,774

TROLLEYS FOR SINGLE RAILS WITH FIXED STEM

4R/T081-082						2R/T081-082					4R/T083	
MEASUREMENT	D	F	LF	L	I	MEASUREMENT	D	F	LF	L	BEARING \varnothing mm 24	
BIG 081	54	M20	85	125	60	BIG 081	54	M20	82	122		
MEDIM 082	44	M12	58	95	50	MEDIM 082	44	M12	58	92		

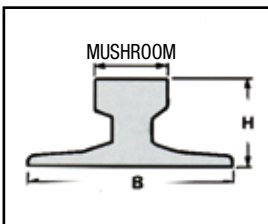
WIDE RANGE OF FIXED AND SWIVELLING TROLLEYS

TROLLEYS FOR SINGLE RAILS WITH FIXED STEM



RAILS FOR RAILWAY LINES (FLAT-BOTTOM)

RAIL TYPE AND MARKING	WEIGHT Kg/ml	HEIGHT	BASE	MUSHROOM
27 UNI 3141	27,35	120	95	50
36 UNI 3141	36,19	130	100	60
46 UNI 3141	46,78	145	135	65
50 UNI 3141	49,85	148	135	67
60 UNI 3141	60,34	172	150	72



RAILS FOR RUNWAYS (BURBAK)

DIN NAME		PROFILE NUMBER	WEIGHT Kg/ml	DIMENSION		
				HEIGHT	BASE	MUSHROOM
KS 22	A 45	1	22,2	55	125	45
KS 32	A 55	2	32,0	65	150	55
KS 43	A 65	3	43,5	75	175	65
KS 56	A 75	4	56,6	85	200	75
KS 75	A 100	5	75,2	95	200	100
		5 A	77,0	100	200	100
KS 101	A 120	6	101,3	105	220	120
		7	151,3	150	220	150

